

**THE UNITED REPUBLIC OF TANZANIA  
NATIONAL EXAMINATIONS COUNCIL  
CERTIFICATE OF SECONDARY EDUCATION EXAMINATION**

**033/1**

**BIOLOGY 1**

**TIME: 3 HOURS**

**Thursday, 11<sup>th</sup> October 2012a.m.**

---

**INSTRUCTIONS**

1. This paper consists of three sections A, B and C.
2. Answer **all** questions from sections A and B and **one (1)** question from section C.
3. Read each question carefully before you start answering it.
4. Except for diagrams that must be drawn in pencil, all writing should be done using a blue or black pen.
5. Calculators are **not** allowed in the examination room.
6. Cellular phones are **not** allowed in the examination room.
7. Write your **Examination Number** on every page of your answer booklet(s).



- (x) A rise in the temperature of a human body is corrected by
- A construction of the skin arteries and sweating
  - B construction of the skin arteries and shivering
  - C dilation of the skin arteries and sweating
  - D dilation of the skin arteries and shivering
  - E shivering and sweating

2. Match the responses in **List B** with the phrases in **List A** by writing the letter of the correct response from **List B** beside the item number of **List A** in your answer booklet. Each choice in column B may be used once, more than once or not at all.

LIST A	LIST B
(i) The layer of cells sensitive to light	A. Aqueous humour
(ii) Lacks light intensity cells	B. Cornea
(iii) Cells sensitive to light of low intensity	C. Iris
(iv) Cell sensitive to coloured light intensity	D. Eyebrow
(v) Control the intensity of the light entering the eye	E. Retina
(vi) Control the shape of the lens	F. Rods
(vii) Correct short sight	G. Blind spot
(viii) Reduce reflection of the light within the eye	H. Cones
(ix) Helps to refract the light into the eye	I. Eyelash
(x) Cause refraction of the light in the eye	J. Choroids
	K. Ciliary body
	L. Diverging lens
	M. Fovea
	N. Pupil
	O. Eyelids

## SECTION B (60 Marks)

Answer **all** questions in this section.

All questions carry **8 marks** except for question five and six which carry **6 marks** each.

3. (a) Outline four features which distinguish a Biology Laboratory from other school facilities.  
(b) Outline four steps involved in using a microscope.
4. (a) Define the following terms as used in Biology:
  - (i) First Aid kit
  - (ii) Risks
  - (iii) An accident
  - (iv) Poisoning  
(b) Outline four procedures of giving First Aid to a person who has been stung by a bee.
5. (a) Describe the following ecological terms:
  - (i) Decomposers
  - (ii) Producers
  - (iii) Parasites  
(b) With example, briefly explain how comparative embryology supports the idea of organic evolution.
6. (a) Outline three factors affecting transpiration.  
(b) State three significance of transpiration.
7. (a) The laboratory technician at Mtakuja secondary school performed an experiment with the aim of proving the Mendelian experiment on single factor inheritance for a coat colour in mice. In the experiment, pure-breed (homozygous) black fur mouse (male) was mated with a pure-breed brown fur mouse (female). The gene for black fur colour was dominant over the gene for brown fur colour. Use crosses to show the possibilities of the results in the first filial generation.  
  
(b) Explain the meaning of the following:
  - (i) Gene
  - (ii) Recessive
  - (iii) Phenotype
8. (a) Define the following terms:
  - (i) Growth
  - (ii) Intercalary growth  
(b) Briefly explain three factors that affect growth and development in humans.

9. The diagram in Figure 1 is the alimentary canal of a human being. Study the diagram and answer the questions that follow:

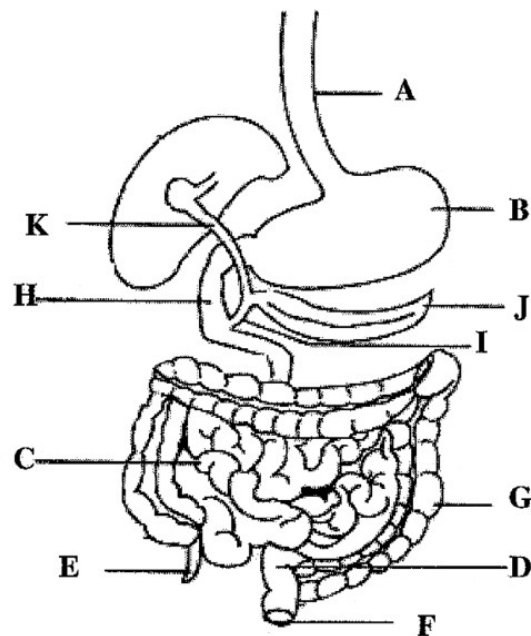


Figure 1

- (a) Name the parts labelled A – K.
- (b) (i) Name the digestive juice which is produced in organ labelled B.  
(ii) Mention the substances contained in the digestive juice named in (b) (i) above.
10. (a) Briefly explain three importance of movement in plants and animals.  
(b) State any five functions of the skeleton.

### SECTION C (20 Marks)

Answer **one (1)** question from this section.

11. Describe the mechanism of breathing in human beings. Diagrams are not necessary.
12. Elaborate the causes of drug abuse to young people and advise the Tanzanian Government on the ways of combating drug abuse in the country.
13. Explain five factors which contribute to irresponsible sexual behavior among young people and their effect in the community.