

THE UNITED REPUBLIC OF TANZANIA  
NATIONAL EXAMINATIONS COUNCIL OF TANZANIA  
CERTIFICATE OF SECONDARY EDUCATION EXAMINATION

034/1

AGRICULTURE 1  
(For Both School and Private Candidates)

Duration: 3 Hours

Year: 2025

Instructions

1. This paper consists of sections A, B and C with a total of **eleven (11)** questions.
2. Answer **all** questions in sections A and B and **two (2)** questions from section C.
3. Section A carries **sixteen (16)** marks, section B **fifty four (54)** marks and section C **thirty (30)** marks.
4. All writing must be in **black** or **blue** pen.
5. All answers must be written in the answer booklet(s) provided.
6. Communication devices and any other unauthorised materials are **not** allowed in the examination room.
7. Write your **Examination Number** on every page of your answer booklet(s).



## SECTION A (16 Marks)

Answer all questions in this section.

1. For each of the items (i) - (x), choose the correct answer from the given alternatives and write its letter beside the item number in the answer booklet provided.

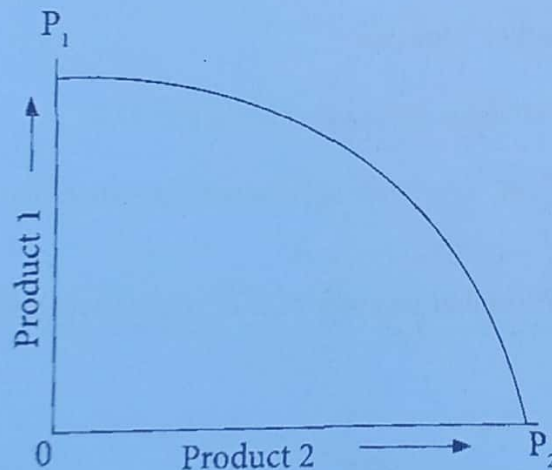
(i) The laboratory investigation done on round potatoes wounds indicated that, tubers produced white juice upon squeezing. Which type of a disease would you conclude that has been affecting the plants?

- A Late blight                      B Early blight                      C Bacterial wilt  
D Mosaic                              E Viral disease

(ii) In Tanzania, land tenure can be grouped into different categories. Which one can be given to an individual, a married couple or a group of people?

- A Communal                      B Open access                      C State owned  
D Private                              E Government

(iii) On deciding what to produce, a farm manager has to consider the relationship among products. What kind of product relationship does the following figure illustrate?



- A Joint products                      B Complementary products  
C Supplementary products                      D Competitive products  
E Mutually exclusive products

(iv) Which set represents the crops grown for the production of aromatic substances for food flavouring?

- (i) Cloves  
(ii) Roses  
(iii) Ginger  
(iv) Tomatoes  
(v) Cinnamon

- A (i), (ii) and (v)                      B (ii) and (iv)                      C (i), (iii) and (v)  
D (iii) and (iv)                              E (i), (ii) and (iii)

(v) Soil profile is made up of different horizons. Which one contains very little soil that lacks structure?

- A Horizon "O"                      B Horizon "A"                      C Horizon "B"  
D Horizon "C"                      E Horizon "R"

(vi) In early and modern times, agriculture has been considered important. Which one among the following serves in both times?

- A Basis for research                      B Source of income  
C Creating employment                      D Source of foreign exchange  
E Source of food

(vii) In areas where coffee is grown, farmers are advised to have tools for removing excessive branches which are less or not productive. Which tools would you advise farmers to possess in order to perform the task?

- A Shears                      B Secateurs                      C Sickles  
D Forks                      E Slashers

(viii) Moisture is an important requirement for plant growth. At what stage of growth in maize plants it is critically needed?

- A Silking and tasseling                      B Root enlargement  
C Flowering and panicle initiation                      D Vegetative growth  
E Crown root initiation

(ix) During dry seasons, cattle suffer from shortage of feeds. Which forms of feed conservation would you advise the farmers to practice to address the problem?

- (i) Concentrate  
(ii) Hay  
(iii) Succulent  
(iv) Silage  
(v) Roughage  
A (i) and (iii)                      B (ii) and (iv)                      C (i) and (v)  
D (ii) and (iii)                      E (iv) and (v)

(x) Why is phosphorus essential for plant growth and development?

- A Promotes the formation of roots  
B Promotes the formation of chlorophyll  
C Is essential for normal cell division  
D Regulates the uptake of potassium by plants  
E Acts as a detoxifying agent



2. Match the functions of parts of an abattoir in **List A** with their corresponding parts in **List B** by writing the letter of the correct response beside the item number in the answer booklet provided.

List A		List B
(i)	A corridor where the animal is driven to enter in the stunning box.	A Slaughter platform
(ii)	A facility in which the animal is made unconscious by electrical shock to minimize the pain of slaughter.	B Bleeding rail
(iii)	An area attached to the stunning box onto which an unconscious animal falls on ready for the throat to be severed.	C Stunning box
(iv)	A section where the carcass is held to allow for bleeding.	D Skinning cradle
(v)	A section on which the opening cuts are made ready for skin removal.	E Entry race
(vi)	An area where the carcass is lifted off the ground for flaying process to be completed.	F Dressing rail
		G Cold room
		H Inspection box

### SECTION B (54 Marks)

Answer **all** questions in this section.

3. Low production of tomatoes might be a result of failure to properly manage the crop seedlings in the nursery. What would you advise on the management of the seedlings? Give nine points. **(9 marks)**
4. (a) For maximum crop yield, the amount of soil organic matter must be maintained at a certain level. How can that be achieved? Give three points. **(3 marks)**
- (b) If you are asked to determine the quantity and rate of accumulation of organic matter in your school farm's soil, what factors would you consider? Give six points. **(6 marks)**
5. (a) How do plant diseases affect crop production enterprises? Give four points. **(4 marks)**
- (b) When planning to apply pesticides to kill certain harmful insects in the field of crops, which five factors should be considered for the application to be effective? **(5 marks)**
6. "Selection of feed materials to use for feeding livestock, is a decision which is determined by certain factors". Justify this statement by giving six points. **(9 marks)**

7. How can a labour force efficiency in sisal farming be increased? Briefly explain by using six points. **(9 marks)**
8. Why the Tanzania agricultural marketing system is not performing to its potential? Explain by giving nine points. **(9 marks)**

### **SECTION C (30 Marks)**

Answer **two (2)** questions from this section.

9. During farm visit around the school, Form One students were surprised to see high weeds infestation in the farm. In six points, explain what could be the reasons for weeds being so successful and dominant in the environment. **(15 marks)**
10. The knowledge of genetically modified organism (GMO) has increased food security in some society. Describe its advantages and disadvantages. Give three points for each. **(15 marks)**
11. Using five points, show how soil texture is important in plant growth. **(15 marks)**