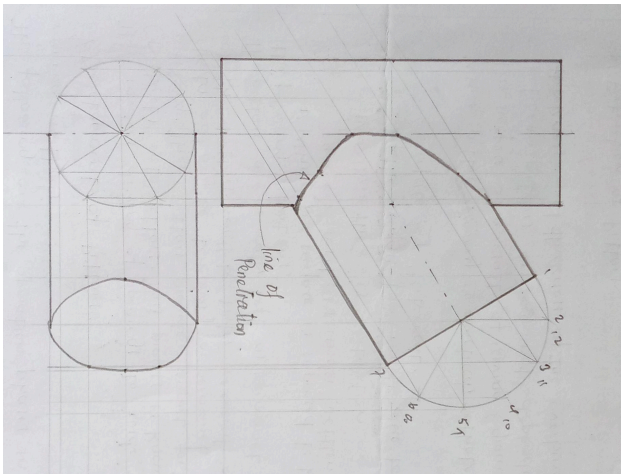
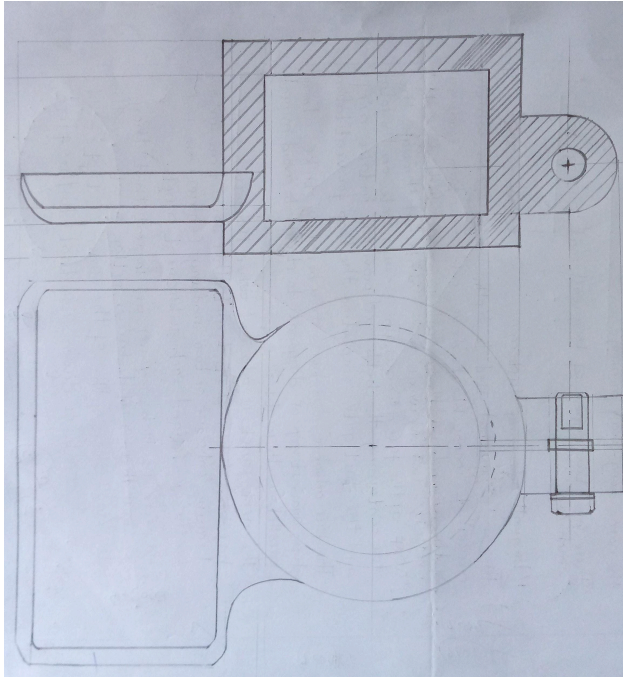


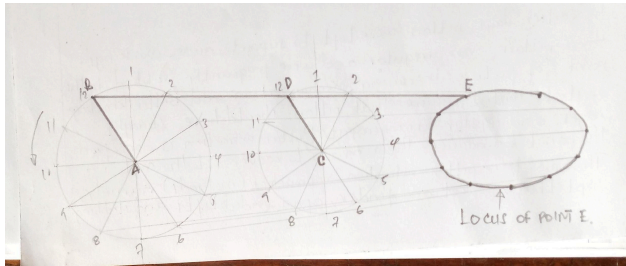
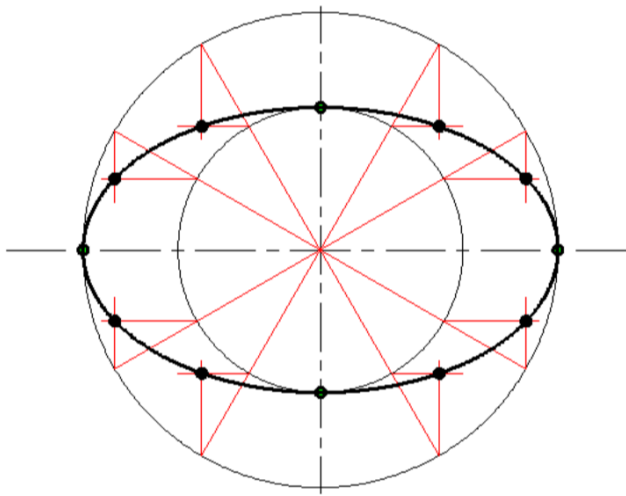
MECHANICAL DRAUGHTING 2007 - NECTA FORM FOUR

Solutions from: [Maktaba by TETEA](https://maktaba.tetea.org)

By Yohana Lazaro

1.

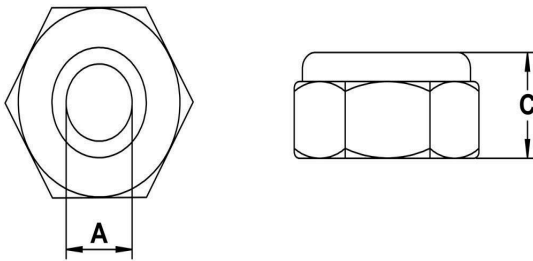




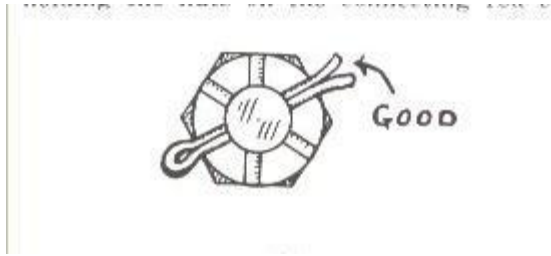
5(a) 1-ground, 2-battery, 3-switch, 4-resistor, 5-transformer, 7-junction, 8-AND gate, 9-capacitor, 10-open loop.

(b) locking devices

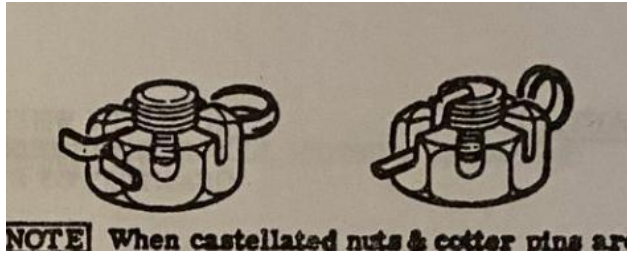
(i)



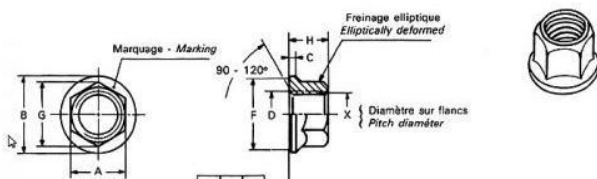
(ii)



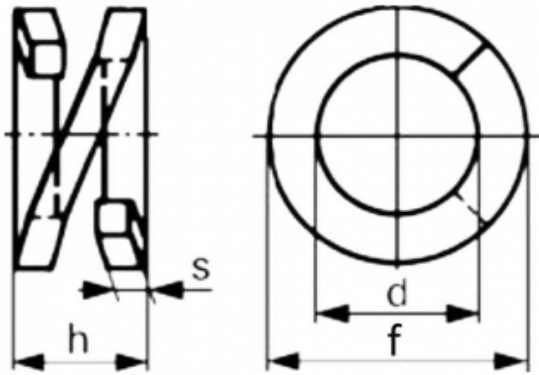
(iii)



(iv)



(v)



6(a)-Tolerance is the difference between maximum limit of size and minimum Limit of size.

-upper limit is the largest acceptable size for a component.

-nominal size is the dimension to which a part is to be made, if it were possible to manufacture to exact size.

-positive dimension is the algebraic difference between maximum limit of size and its corresponding basic size.

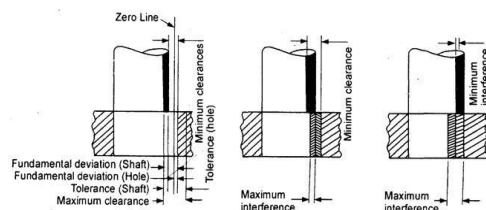
(b)types of dimensions

-horizontal dimension

-vertical dimension

-parallel dimension

(C)



Prepared by

YOHANA P. LAZARO, mchelezdo2@gmail.com,0624876331