

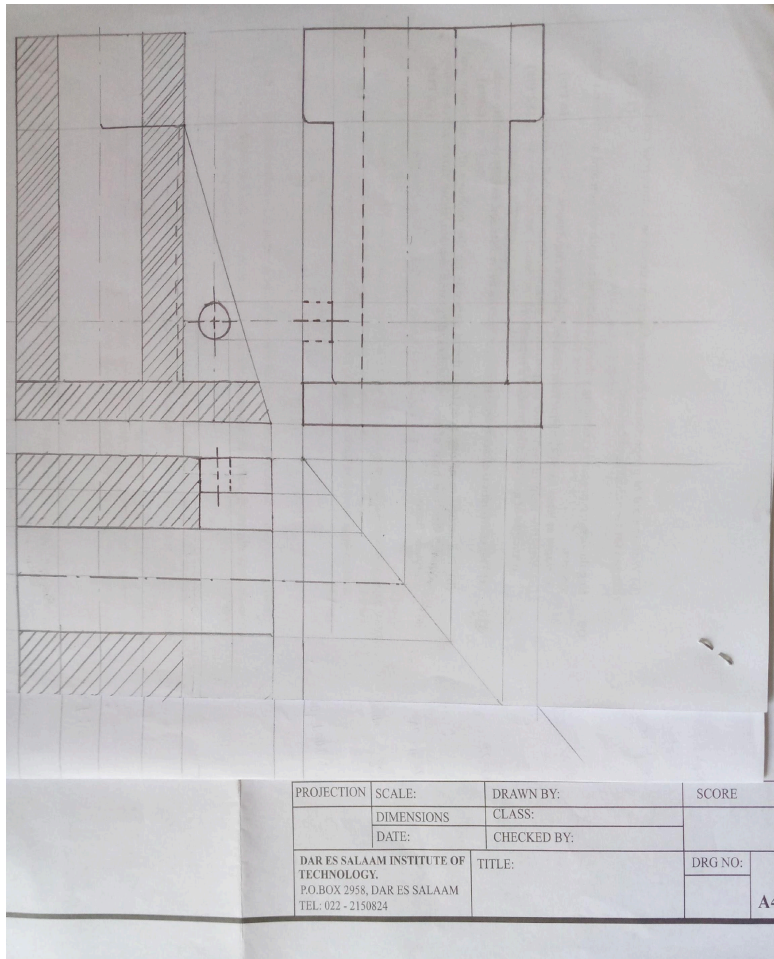
MECHANICAL DRAUGHTING 2013 - NECTA FORM FOUR

Solutions from: [Maktaba by TETEA](https://maktaba.tetea.org)

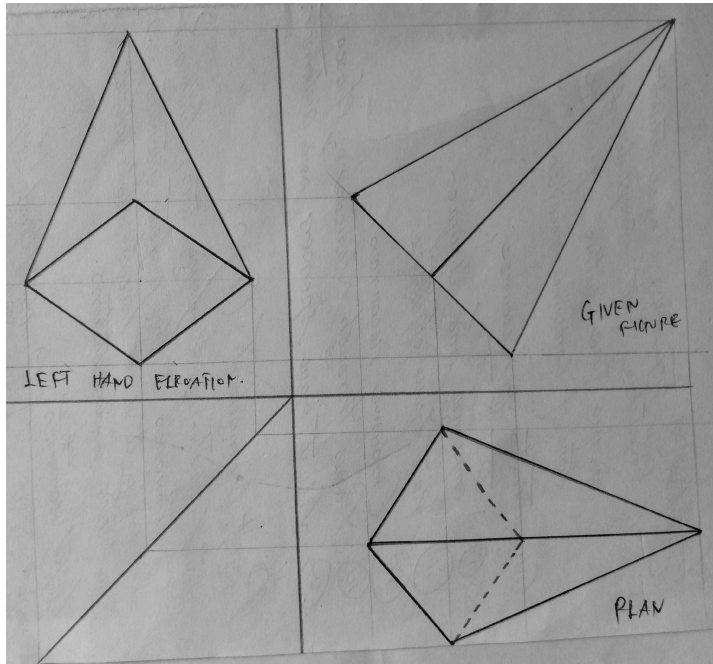
By Yohana Lazaro

NOTE. ALL FIGURES ARE DRAWN TO A GIVEN DIMENSIONS.

1. Drawn in first angle projection.



2(a).



(b)(i) types of pencils

-soft pencils

-medium pencils

-hard pencils.

(ii)-compass is used to draw circles

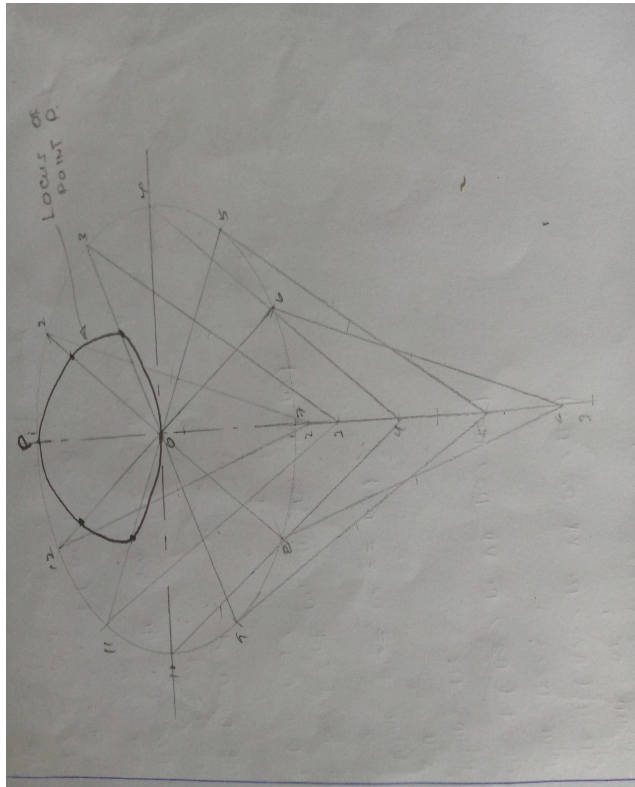
-trammel is used to scribe circles which are too large such that cannot be drawn by compass.

(iii) instruments used to draw horizontal lines are

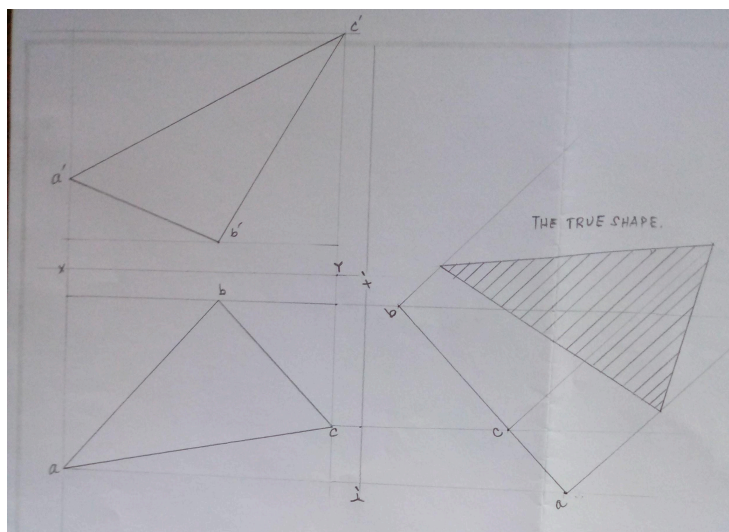
-T-square

-A ruler

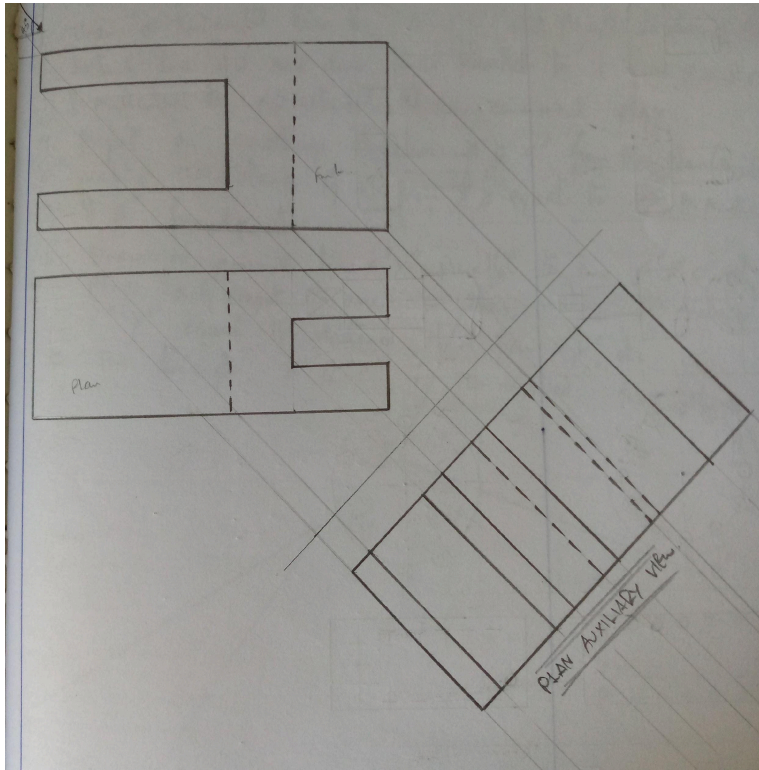
3. locus of a point P



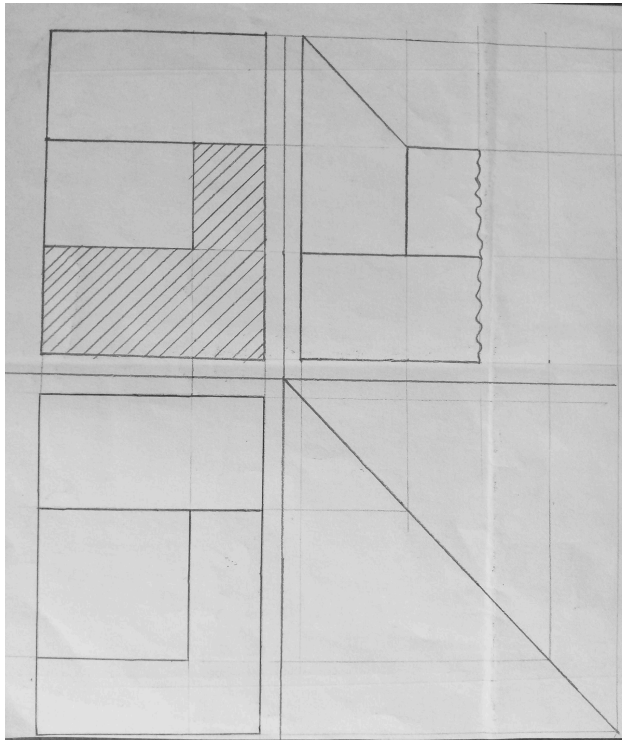
4. True shape of a triangle.



5. Auxilliary view.



6(a)



(b) Uses of threads are

-used to convert rotational motion into linear motion, or vice versa.

(c) Standard sizes of papers.

SIZE (MILLIMETERS)			LETTER SIZE
WIDTH		LENGTH	
210	x	297	A4
297	x	420	A3
420	x	594	A2
594	x	841	A1
841	x	1189	A0

Prepared by:-

YOHANA PETER LAZARO. 0756274618,0624876331, mchelezdo2@gmail.com