

**THE UNITED REPUBLIC OF TANZANIA
NATIONAL EXAMINATION COUNCIL OF TANZANIA
FORM TWO SECONDARY EDUCATION EXAMINATIONS, 2004**

0016

FINE ART

TIME: 2:30 Hours.

SOLUTIONS

Instructions

1. This paper consists of sections **A**, **B** and **C**.
2. Select two sections and attempt one question from each of the two sections selected
3. Use a separate sheet of paper for each question you attempt.
4. Your work must fill or almost fill the paper used.
5. Cell phones are not allowed in the examination room.

FOR EXAMINER'S USE ONLY		
QUESTION NUMBER	SCORE	EXAMINER'S INITIALS
1		
2		
3		
4		
5		
6		
TOTAL		

SECTION A

STILL LIFE

1. Make a drawing of a lantern, a matchbox, and a candle arranged on a stool.



2. Make a drawing of a saucepan, a cup, and a spoon placed inside the cup.



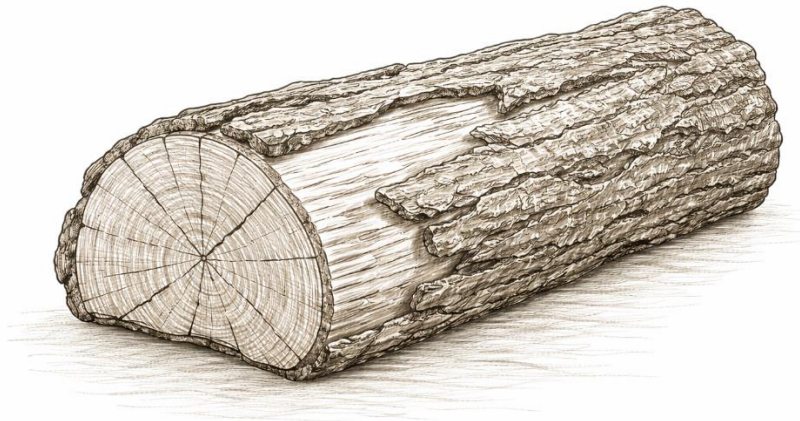
SECTION B

NATURE DRAWING

3. Make a drawing of a tree branch with leaves and small fruits.



4. You have been provided with a piece of firewood. Make a detailed drawing of it.



SECTION C

FIGURE DRAWING

5. Make a drawing of a pupil seated on a bench writing in an exercise book.



6. Make a drawing of a man bending while lifting a sack from the ground.

