

**THE UNITED REPUBLIC OF TANZANIA
NATIONAL EXAMINATION COUNCIL OF TANZANIA
FORM TWO SECONDARY EDUCATION EXAMINATIONS, 2008**

0016

FINE ART

TIME: 2:30 Hours.

SOLUTIONS

Instructions

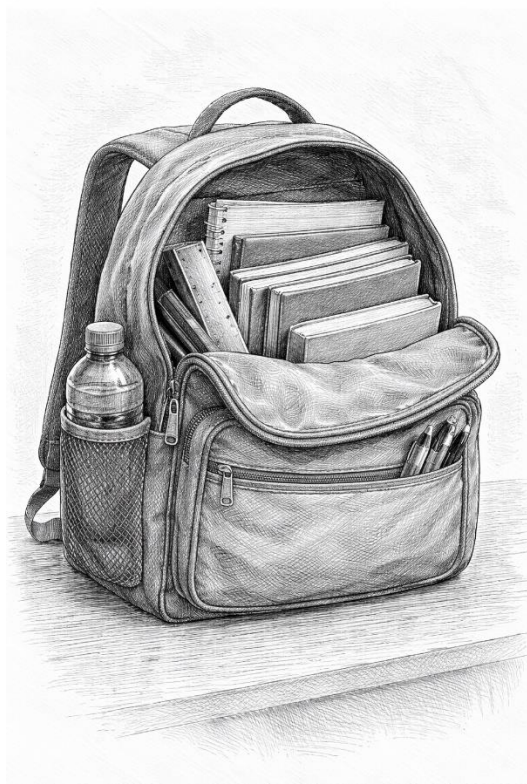
1. This paper consists of sections **A**, **B** and **C**.
2. Select two sections and attempt one question from each of the two sections selected
3. Use a separate sheet of paper for each question you attempt.
4. Your work must fill or almost fill the paper used.
5. Cell phones are not allowed in the examination room.

FOR EXAMINER'S USE ONLY		
QUESTION NUMBER	SCORE	EXAMINER'S INITIALS
1		
2		
3		
4		
5		
6		
TOTAL		

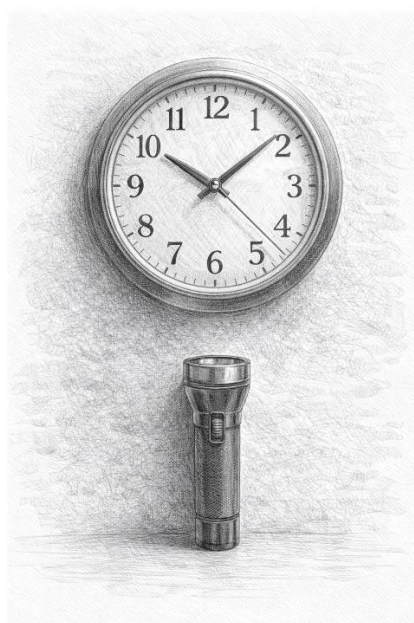
SECTION A

STILL LIFE

1. Make a drawing of a school bag opened to show books and a ruler inside it.



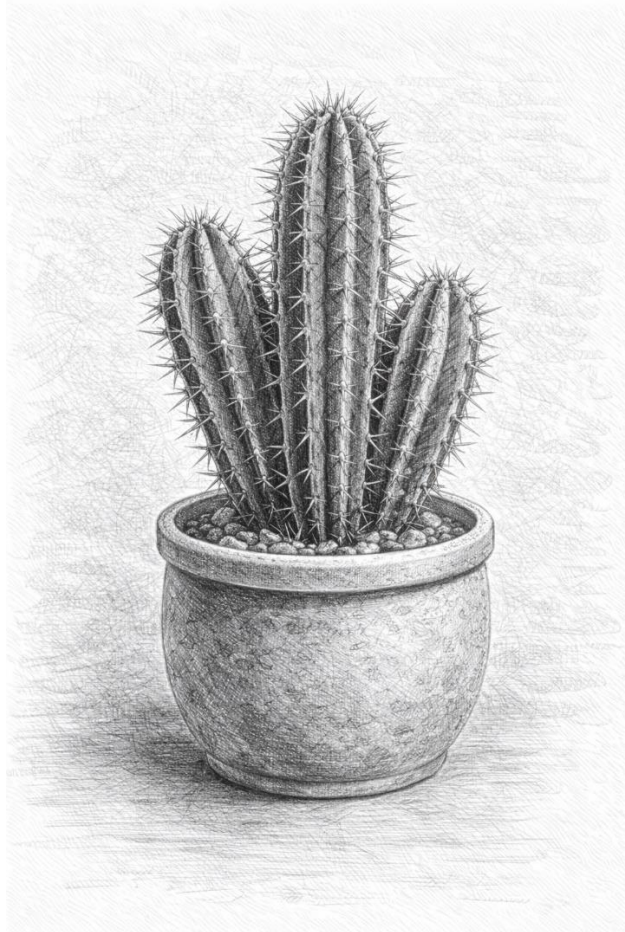
2. Make a drawing of a wall clock and a torch placed directly below it.



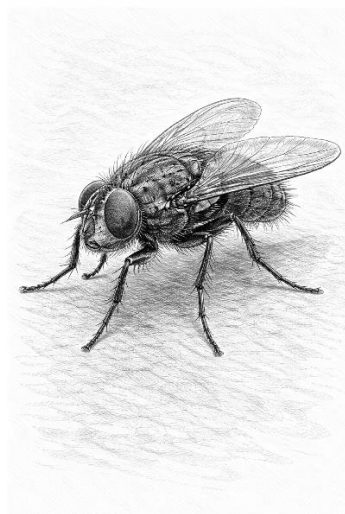
SECTION B

NATURE DRAWING

3. Make a drawing of a cactus plant in a container.



4. You have been provided with an insect. Make a careful and detailed drawing of it.



SECTION C

FIGURE DRAWING

5. Design a school Motto with message “FOWARD EVER” A4 sized manila sheet. The squares should be 0.9cm and use only two colours.



6. Paint a student who is sweeping the classroom floor with a rag, a bucket on the left side on a A4 sized manila sheet.

