

District

Candidate's Number _____

School's Name _____

Region _____

District _____

SECTION A (20 Marks)

Answer **all** questions from this section.

1. For each of the items (i) - (x), choose the correct answer then write its letter in the box provided.

(i) After a fire outbreak in the industry, the firefighter unit used gas cylinders to extinguish it. Which type of gas did the cylinders contain?

- A Chlorine
- B Oxygen
- C Hydrogen
- D Carbon dioxide
- E Nitrogen

(ii) A pupil wanted to learn about diseases through the internet. Which web browser would be appropriate for obtaining the information needed?

- A DMZO
- B Google chrome
- C Yandez
- D Bing
- E dr.yahoo.com

(iii) The Science and Technology teacher assigned Standard Seven pupils to make an antenna. What is the first step to consider before they start making it?

- A Choose the type of antenna
- B Collect different antenna
- C Identify the uses of antenna
- D Choose the devices to be used
- E Testing the antenna

(iv) A boy pushed a wall for 7 minutes, the wall did not fall down. His friends said he didn't do any work. Why did they say that?

- A He used little force to push the wall
- B He did not follow scientific procedures of pushing the wall
- C He used little time to push the wall
- D He stood very close to the wall while pushing
- E He pushed the wall that did not move any distance

Candidate's Number _____

School's Name _____

Region _____

District _____

- (v) A sports and games teacher prepared a budget for sports tour for her school by using spread sheet program. Why did she use this program?

A Cannot be easily erased
B Easy to use
C Saves time
D Needs few information
E It stores a lot of information

☐

- (vi) A teacher assigned Class Seven pupils to grow a seed in a closed box with a hole on one side. After a week a plant grow and bent towards the hole. This action explains which characteristic of plants?

A Growing well outside
B Growing towards light
C Need an open space to grow
D Growing by bending
E Growing slowly

☐

- (vii) Standard Seven Pupils learnt several examples about physical and chemical changes. Which example was used to explain chemical change?

A Rotting of plants
B Melting of candle
C Freezing of water
D Warming an ice block
E Dissolving salt in water

☐

- (viii) Teacher brought different tools in the classroom, and asked a pupil to choose a tool that belongs to second class lever. Which tool did he choose?

A Wheel barrow
B A pair of scissors
C Claw hammer
D Spade
E Broom

☐

Candidate's Number _____

School's Name _____

Region _____

District _____

- (ix) Sayuni saw her brother painting iron frame windows. What is the advantage of doing that?

- A Prevent them from damage
- B Make them clean
- C Prevent them from dust
- D Prevent them from rusting
- E Make them strong

- (x) Which property of light is represented by the appearance of rainbow in clouds with several colours?

- A Shinning
- B Absorption
- C Bending
- D Diverging
- E Reflection

2. Match the function of plant parts in **List A** with the parts in **List B** and write the letter of the correct answer in the space provided.

List A		Answers	List B
(i)	The part used to synthesize its food.	()	A Upper epidermis
(ii)	The tissue for transporting food.	()	B Stomata
(iii)	It is a tissue which transports water and minerals in the plant.	()	C A flower with beautiful colour
(iv)	A site for gaseous exchange in leaves.	()	D Xylem
(v)	Stores and protects stomata found in upper part of the leaf.	()	E Leaf
			F Phloem
			G A fruit with seeds

Candidate's Number _____

School's Name _____

Region _____

District _____

3. Complete the items (i) - (v) by choosing the correct word given in the box and write it beside the item in the space provided.

Oesophagus	Stomach wall	Large Intestine
Rectum	Small Intestine	Mouth
Pancreas		

- (i) Digests and absorbs food nutrients in the body.

- (ii) A part of large intestine which stores faeces before removing it from the body.

- (iii) Transports chewed food from the mouth.

- (iv) Produces an acid to kill the germs brought in the stomach with food.

- (v) Absorbs water and minerals from undigested food.

SECTION B (20 Marks)

Answer **all** questions from this section.

4. Industries affect the environment from the wastes they produce. Mention two waste products which can be produced from those industries.

- (i) _____
- (ii) _____
- (iii) What is the general effect caused by the wastes you have mentioned in part (i) and (ii)?

Candidate's Number _____

School's Name _____

Region _____

District _____

5. Answer item (i) – (ii) by writing the correct answer in the space provided.

- (i) Why it is important to apply lubricants to the bicycle chain, wheel and axle, and pedals?

- (ii) When a milling machine is connected to electric supply and turned on, what causes the axle with blades to rotate?

- (iii) A barber decided to shave his customer by using a shaving machine instead of razor blade. What is the advantage of his decision?

6. Tausi saw her uncle lighting a wastes of papers and dry leaves using his spectacles. He placed the wastes under the spectacles until it lite.

- (i) What type of lens did her uncle's spectacles have?

- (ii) How did the lens light wastes?

- (iii) What eye defect does Tausi's uncle have?

- (iv) Mention another type of lens used to correct eye defects apart from that of Tausi's uncle.

Candidate's Number _____

School's Name _____

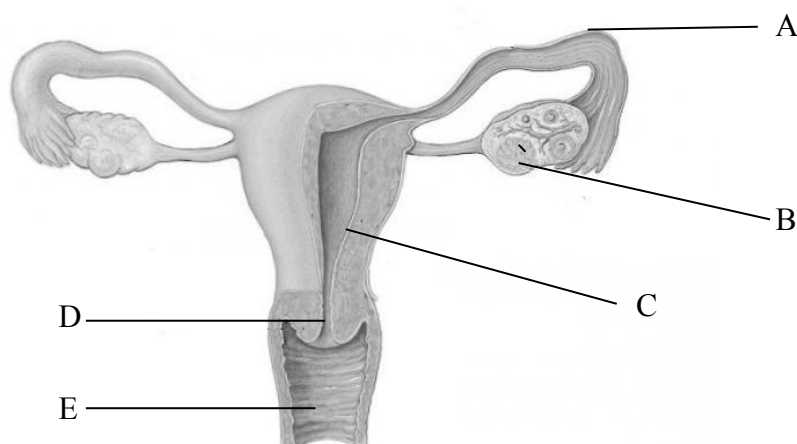
Region _____

District _____

SECTION C

Answer **all** questions in this section.

7. Observe the following drawing then answer the questions that follows.



(i) What will happen if a part represented by the letter **C** in the drawing is inflamed?

(ii) What is the role of a part represented by letter **B** in the drawing?

(iii) What will happen if a part labeled **A** will be cut?

Candidate's Number _____

School's Name _____

Region _____

District _____

8. Observe Figure 1 and answer the questions that follows:

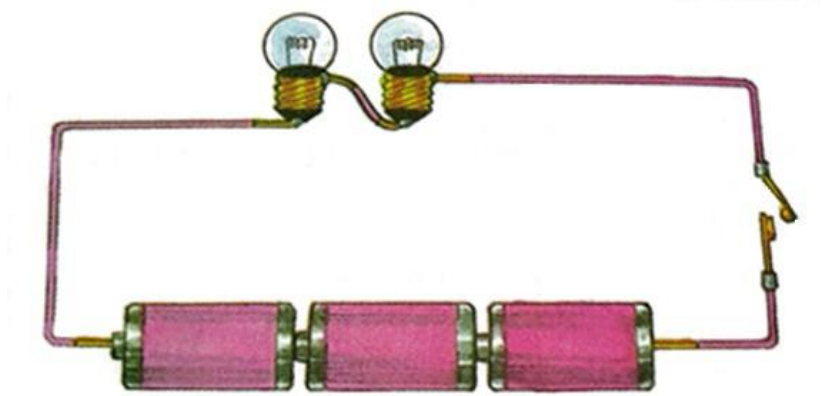


Figure 1

(i) Rafii created a simple circuit as seen in Figure 1. Which type of circuit did he create?

(ii) If the circuit that is created by Rafii had a total of 12 volts and the current of 6 amperes, what is the value of total resistance in bulbs connected?
